

O TANNENBAUM

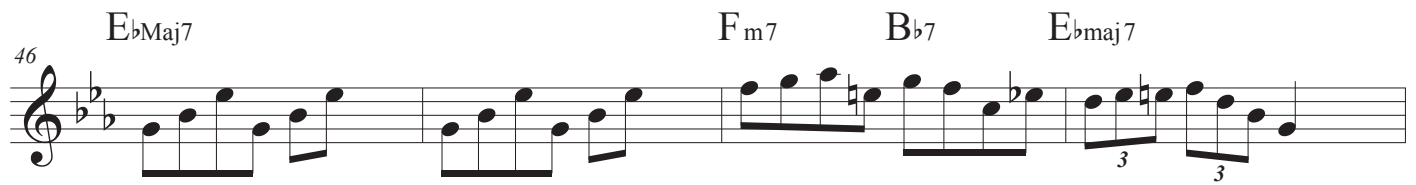
Sheet music for C Instruments, featuring the title "O TANNENBAUM". The music is written in E-flat major (three flats) and 4/4 time. The key signature is E-flat major (three flats). The tempo is marked "C" (Crescendo).

The music is organized into measures, with measure numbers 6, 10, 14, 18, 22, 26, and 30 indicated. Chord progressions are provided above the staff lines.

Chord Progressions:

- Measures 1-4: E \flat maj7, Fm7, B \flat 7, E \flat maj7
- Measures 5-8: E \flat maj7, Fm7, B \flat 7, E \flat maj7
- Measures 9-12: E \flat maj7, Fm7, B \flat 7, E \flat maj7
- Measures 13-16: E \flat Maj7, Fm7, B \flat 7, E \flat maj7
- Measures 17-20: E \flat maj7, Fm7, B \flat 7, E \flat maj7
- Measures 21-24: E \flat maj7, Fm7, B \flat 7, E \flat maj7
- Measures 25-28: E \flat maj7, Fm7, B \flat 7, E \flat maj7
- Measures 29-32: E \flat Maj7, Fm7, B \flat 7, E \flat maj7

O TANNENBAUM



66 E♭maj7 Fm7 B♭7 E♭maj7 3

70 E♭maj7 Fm7 B♭7 E♭maj7

74 E♭maj7 Fm7 B♭7 E♭maj7 3 3 3 3 3 3 3

78 E♭Maj7 Fm7 B♭7 E♭maj7

82 E♭maj7 Fm7 B♭7 E♭maj7 3

86 E♭maj7 Fm7 B♭7 E♭maj7

90 E♭maj7 Fm7 B♭7 E♭maj7

94 E♭maj7 Fm7 B♭7 E♭maj7 3

O TANNENBAUM

4

98 $E_b^{maj}7$ F_m7 B_b7 $E_b^{maj}7$

102 $E_b^{maj}7$ F_m7 B_b7 $E_b^{maj}7$

106 $E_b^{maj}7$ F_m7 B_b7 $E_b^{maj}7$

110 $E_b^{Maj}7$ F_m7 B_b7 $E_b^{maj}7$